

Cartridge filter housing Big Blue Clear

Technical changes reserved | Rev.: 003.23.04



[-> to the product](#)



Big Blue Clear are 2-part plastic housings for standard filter elements (DOE) open on both sides. In addition to standard elements, special BB elements can also be used with outer diameters up to 114 mm.

Inlet and outlet are arranged opposite each other in the filter head. The head and the lower part of the housing are connected to each other by a screw connection.

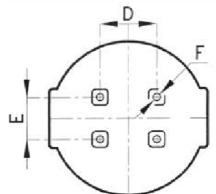
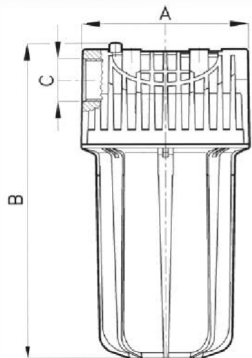
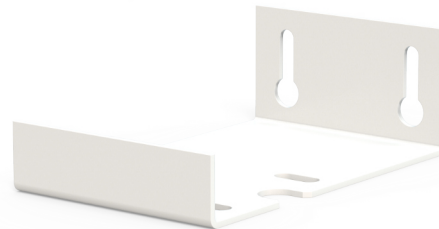
Accessories include brackets for wall mounting and a mounting key for easier opening and closing of the housing.

Available accessories

- Big Blue Clear wrench



- Big Blue Clear mounting bracket



Technical data

Material head:	Polypropylene
Material lower part:	SAN
In-/ outlet:	Female thread BSPP 1" or 1 1/2"
Vent:	Push button in the head
Gasket:	Silicone
Working pressure:	Max. 6,2 bar at 30 °C
Working temperature:	+5 °C at +50 °C
Flow rate:	Up to 6 m ³ /h*
*dependent on the connections as well as the micron rating	
Manufactured in accordance with PED (2014/68/EU) article 4, par. 3	

Applications

- Pre- and fine filtration in water treatment
- Electronic- and photo industry
- Chemical applications
- Surface technology

Dimensions

Type	A	B	C	D	E	F
10-1	185	343	1"	74	75	ø7
10-1 1/2		353	1 1/2"			
20-1		615	1"			
20-1 1/2		625	1 1/2"			

Order information

Big Blue-	<input type="text"/>	-	<input type="text"/>	-	Clear
	Length element		In-/ outlet		
	10	10"	1	1"	
	20	20"	1 1/2	1 1/2"	

Order example: Big Blue-10-1 1/2-Clear